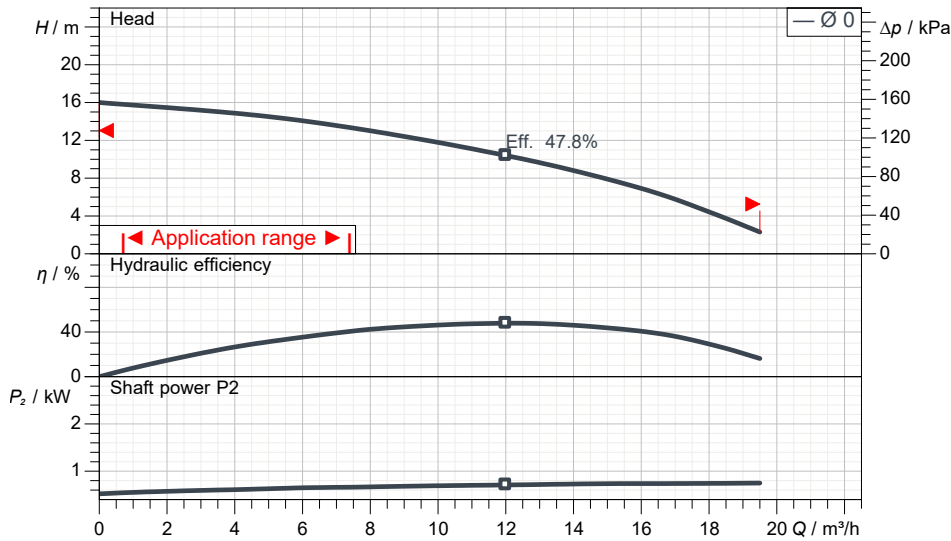


Technical specification
3~ 50 Hz


Characteristic curves according to UNI EN ISO 9906:2012
 P₂ < 10kW: paragraph 4.4.2
 10kW < P₂ < 100kW: Grade 3B
 P₂ > 100kW: Grade 2B
 for pumps with standard material combination

Pump

Series	SF
Pump name	50SF2.75-53 380-415V
Standard	

Motor data

Motor	ND1-2-0.75-U(2) 400-50
Rated voltage	380 V
Frequency	50 Hz
Motor phases	3~
Number of poles	2
Rated power P2	0.75 kW
Rated current	1.9 A
rpm	2810 1/min
Rated torque	2.5 Nm
Start*	Direct starting

Degree of protection	IP 68
Insulation class	E
Protection device	Circle thermal protector
Type of oil	Turbine Oil(ISO VG32)
Oil amount	0.46

Hydraulic

Free passage	11 mm
Impeller type	Channel impeller
Max. hydraulic efficiency	47.8 %
Discharge	50 mm
Curve tolerance	UNI EN ISO 9906:2012

Operating limits (standard pumps)

Max. liquid temperature	40 °C
Max. density treated liquid	1030 kg/m³
pH treated liquid	5-9
Max. start per hour (equally distributed)	10
Wet/dry use	WET
Operating mode	S1

Construction materials

Motor enclosure	Gray Iron Casting 150
Shaft	420J2 Stainless Steel
Pump Casing	Gray Iron Casting 200
Impeller	Gray Iron Casting 200
Suction Cover	Gray Iron Casting 200
Suction plate	N/A
Painting	Epoxy paint (Black)
Screws	304 Stainless Steel
Gaskets	NBR

Construction features

Power cable1	4C*1.25mm2
Power cable2	N/A
Sheath	VCT
Control cable	N/A
Sheath	N/A
Cable length*	6
Mechanical seals	W-14HC
Weight**	20 kg

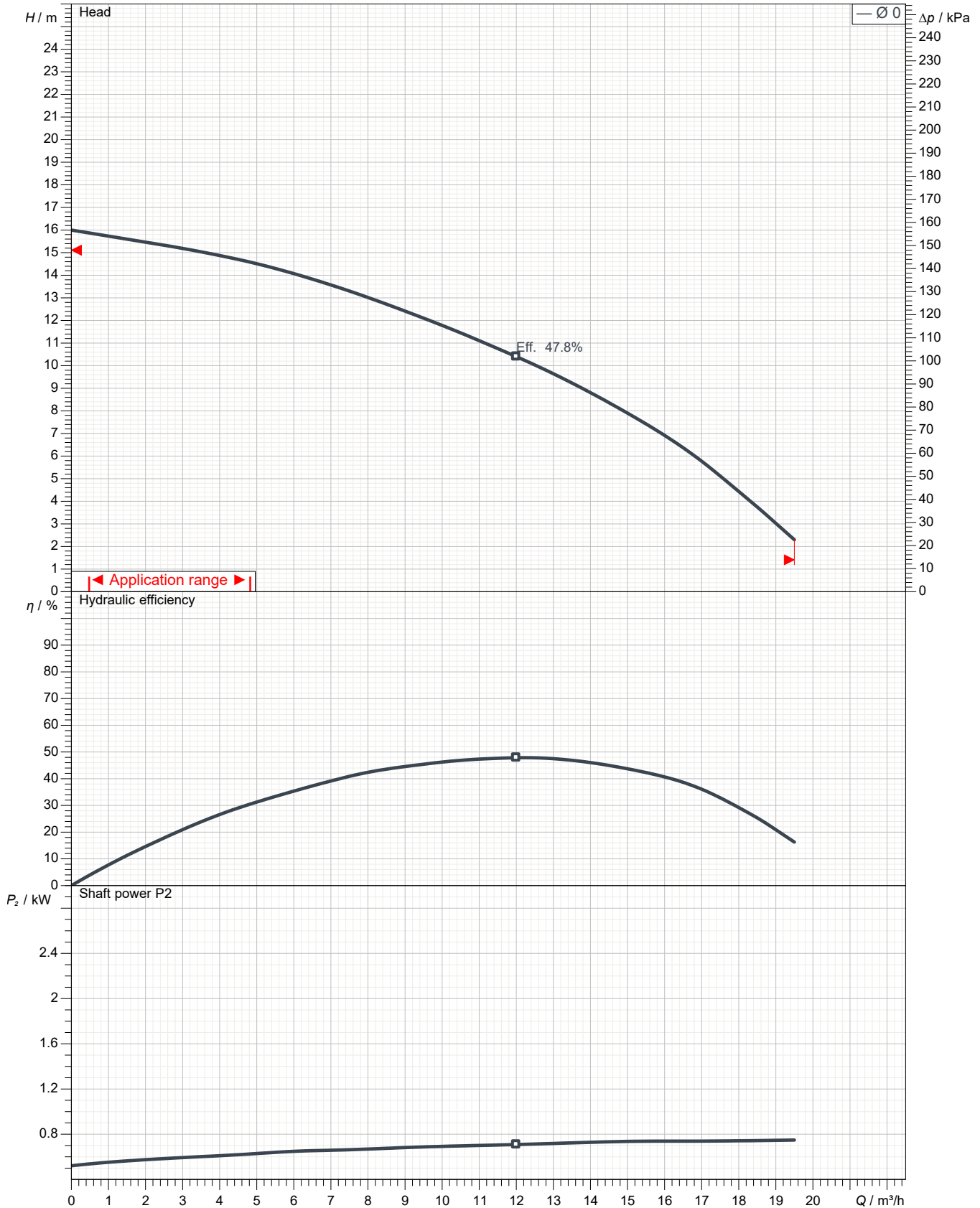
* Please inquire about cable extensions
 ** cable's weight not included

Monitoring features

Monitoring option	
leaking sensor - N/A	
monitoring equipment - N/A	

50SF2.75-53 380-415V
Pump performance curves
3 ~ 50 Hz

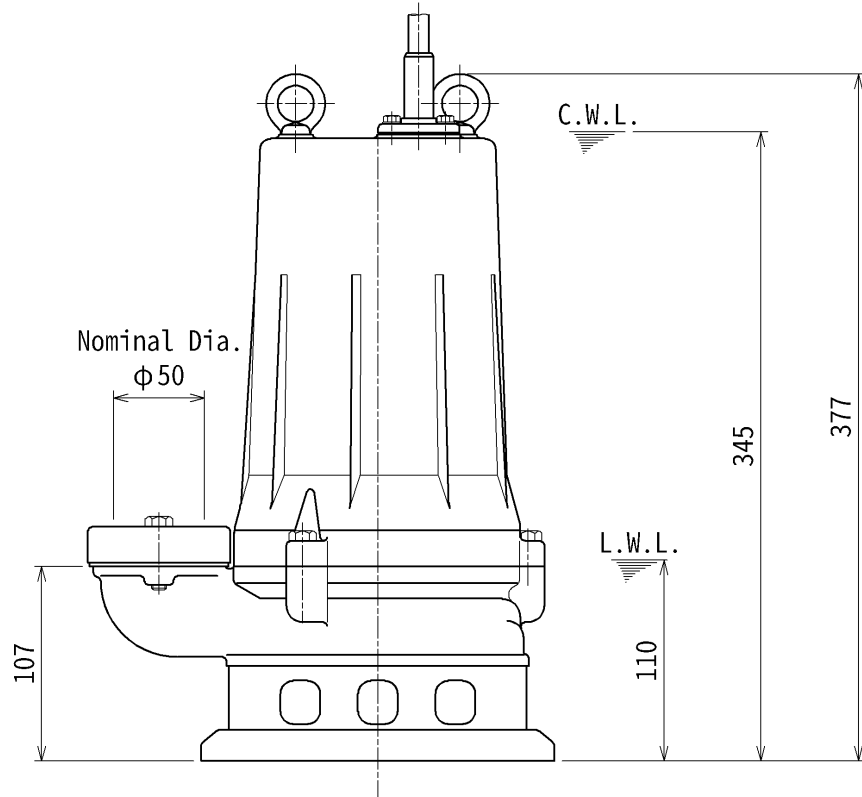
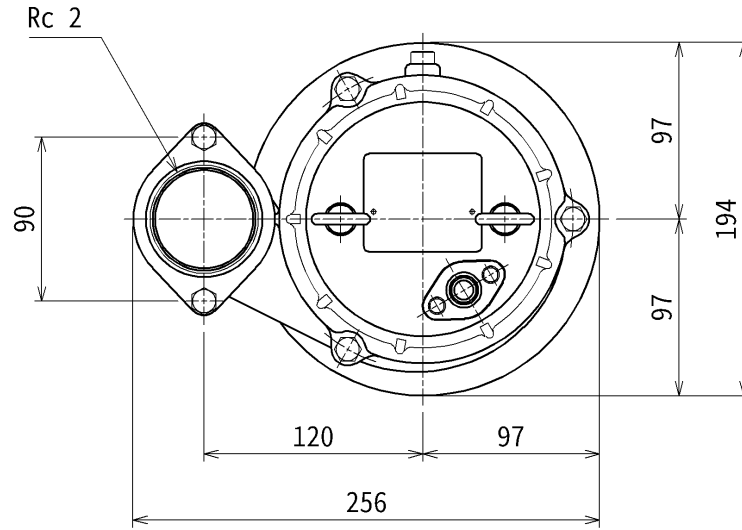
Discharge	Head	Capacity	Rated power	Voltage	Current	rpm
50 mm				380 V	1.9 A	2810 1/min


 Characteristic curves according to UNI EN ISO 9906:2012 for pumps with standard material combination
 P2 < 10kW: paragraph 4.4.2
 10kW < P2 < 100kW: Grade 3B
 P2 > 100kW: Grade 2B

DIMENSION DRAWING		No.	No.	A-23209-25
TYPE	Submersible High-Head Wastewater Pump	MODEL	50SF2.75 -53	

Approximate Weight(※)
20kg

※excluding cable



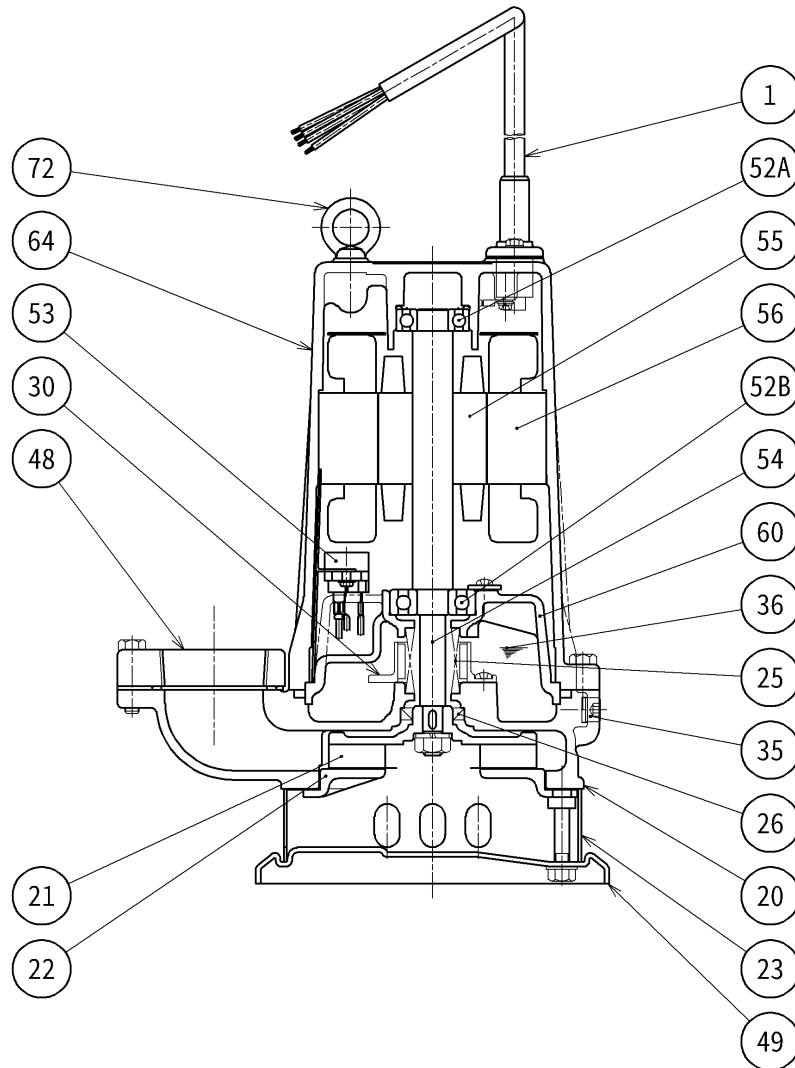
C.W.L.:Continuous running Water Level
L.W.L.:Lowest running Water Level

TSURUMI MFG. CO., LTD.

unit:mm

Created on: 2025-09-09

SECTIONAL DRAWING		No.	No.	A-23210-36
TYPE	Submersible High-Head Wastewater Pump	MODEL	50SF2.75 -63	



REQ. SPECIFICATION	

No.	DESCRIPTION	Q'TY	MATERIAL / NOTE	No.	DESCRIPTION	Q'TY	MATERIAL / NOTE
1	Cable	1	PVC Sheath	52A	Upper Bearing	1	6203ZZC3
20	Pump Casing	1	Gray Iron Casting 200	52B	Lower Bearing	1	6303ZZC3
21	Impeller	1	Gray Iron Casting 200	53	Motor Protector	1	
22	Suction Cover	1	Gray Iron Casting 200	54	Shaft	1	420J2 Stainless Steel
23	Strainer	1	Steel Sheet	55	Rotor	1	
25	Mechanical Seal	1	W-14HC	56	Stator	1	
26	Oil Seal	1	SC22357	60	Bearing Housing	1	Gray Iron Casting 150
30	Oil Lifter	1	Plastic	64	Motor Frame	1	Gray Iron Casting 150
35	Oil Plug	1	304 Stainless Steel	72	Eyebolt	2	304 Stainless Steel
36	Lubricant		Turbine Oil(ISO VG32)				
48	Screwed Flange	1	Plastic				
49	Bottom Plate	1	Steel Sheet				

TSURUMI MFG. CO., LTD.

Created on: 2025-09-09

All data shown are not binding. Tsurumi reserves the right to change data and dimensions without notice.