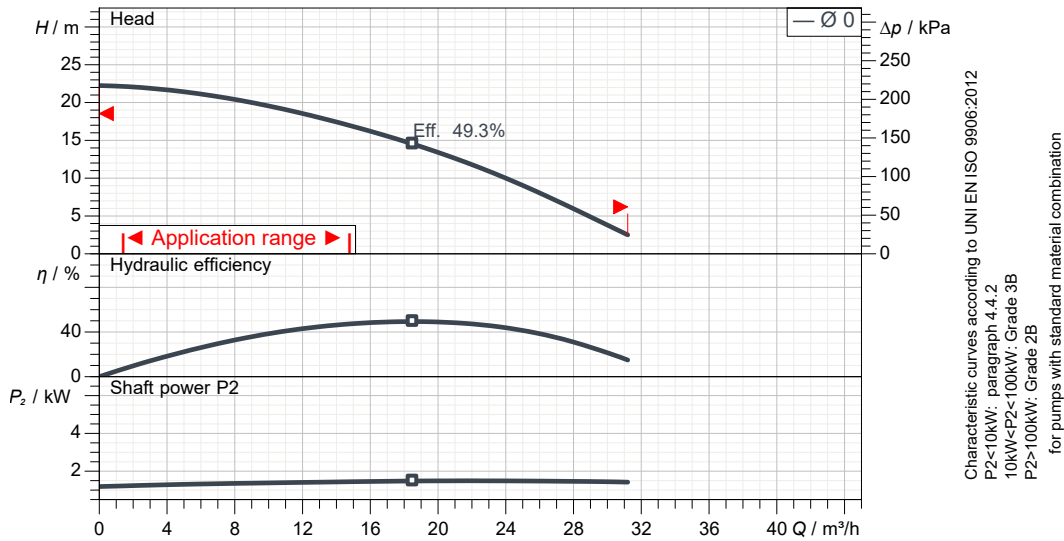


50SF21.5-53 380-415V
Technical specification
3~ 50 Hz

Pump

Series	SF
Pump name	50SF21.5-53 380-415V
Standard	

Motor data

Motor	JT1-2-1.5-SF 400V D UL
Rated voltage	380 V
Frequency	50 Hz
Motor phases	3~
Number of poles	2
Rated power P2	1.50 kW
Rated current	3.6 A
rpm	2912 1/min
Rated torque	4.9 Nm
Start*	Direct starting

Degree of protection	IP 68
Insulation class	F
Protection device	Circle thermal protector
Type of oil	Turbine oil VG32
Oil amount	0.91

Hydraulic

Free passage	11 mm
Impeller type	Channel impeller
Max. hydraulic efficiency	49.3 %
Discharge	50 mm
Curve tolerance	UNI EN ISO 9906:2012

Operating limits (standard pumps)

Max. liquid temperature	40 °C
Max. density treated liquid	1030 kg/m³
pH treated liquid	5-9
Max. start per hour (equally distributed)	6
Wet/dry use	WET
Operating mode	S1

Construction materials

Motor enclosure	Gray Iron Casting 150
Shaft	420J2 Stainless Steel
Pump Casing	Gray Iron Casting 200
Impeller	Gray Iron Casting 200
Suction Cover	Gray Iron Casting 200
Suction plate	N/A
Painting	Epoxy paint (Black)
Screws	304 Stainless Steel
Gaskets	NBR

Construction features

Power cable1	4C*1.25mm2
Power cable2	N/A
Sheath	VCT
Control cable	N/A
Sheath	N/A
Cable length*	6
Mechanical seals	H-20A
Weight**	33 kg

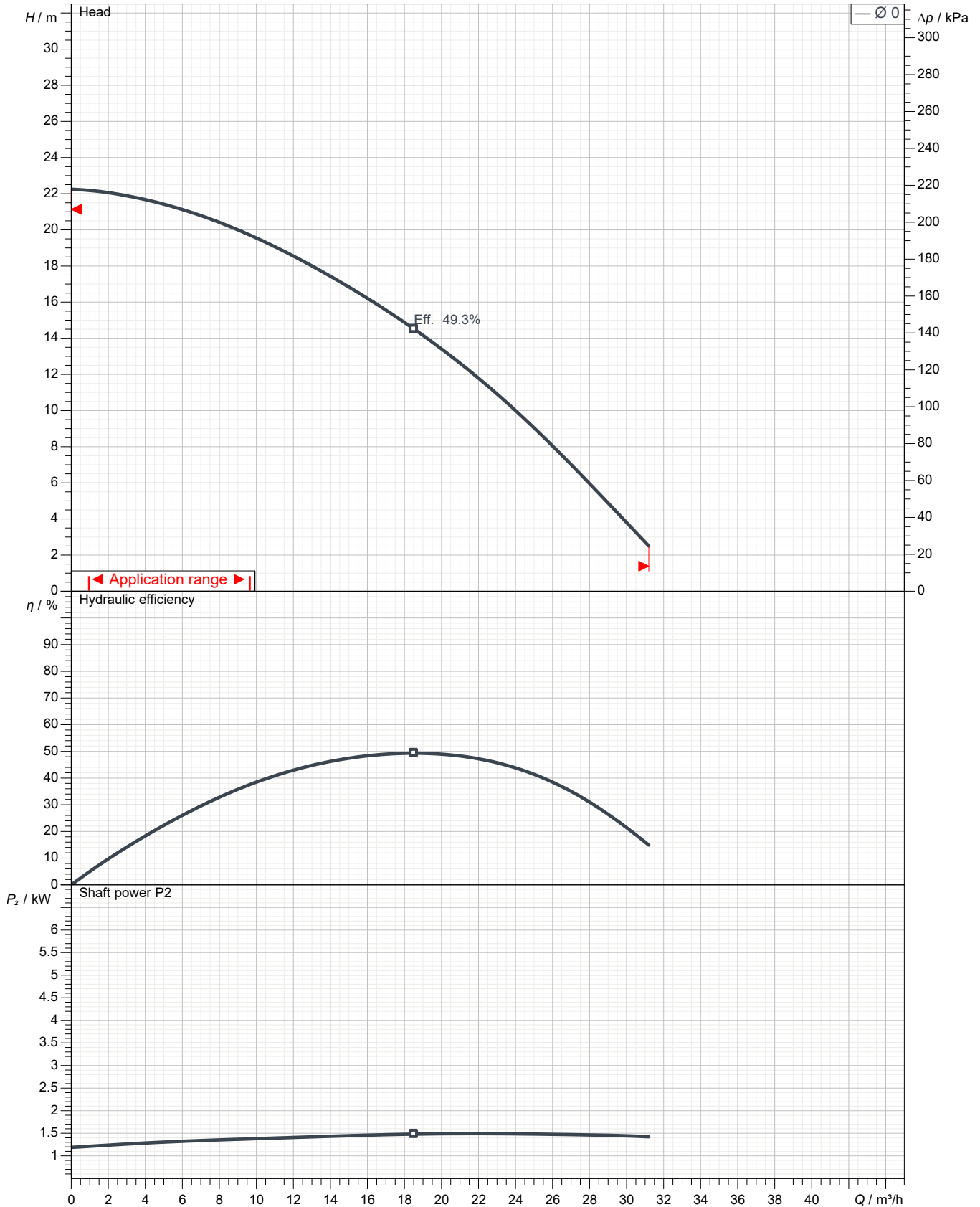
* Please inquire about cable extensions
 ** cable's weight not included

Monitoring features

Monitoring option	
leaking sensor -	N/A
monitoring equipment -	N/A

50SF21.5-53 380-415V
Pump performance curves
3 ~ 50 Hz

Discharge 50 mm	Head	Capacity	Rated power 1.5 kW	Voltage 380 V	Current 3.6 A	rpm 2912 1/min
---------------------------	-------------	-----------------	------------------------------	-------------------------	-------------------------	--------------------------



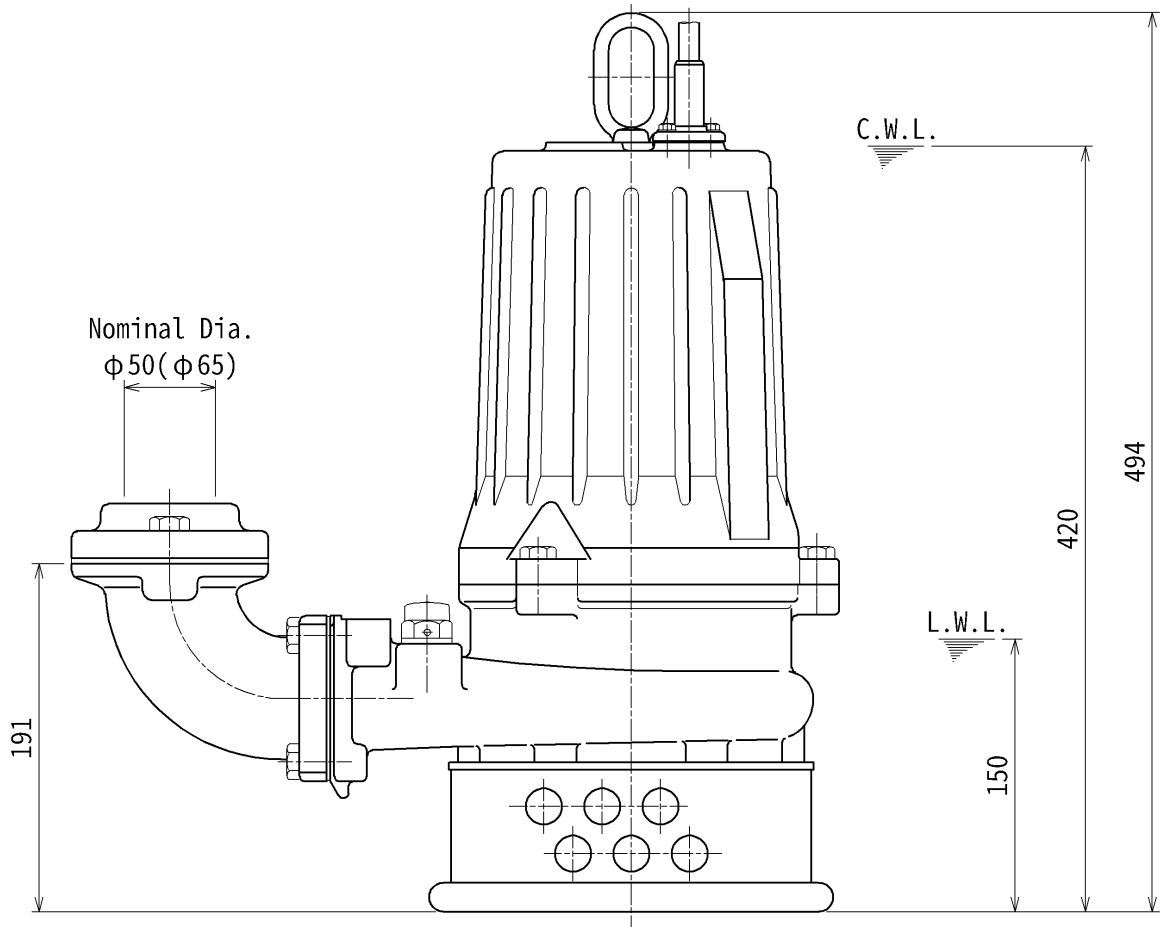
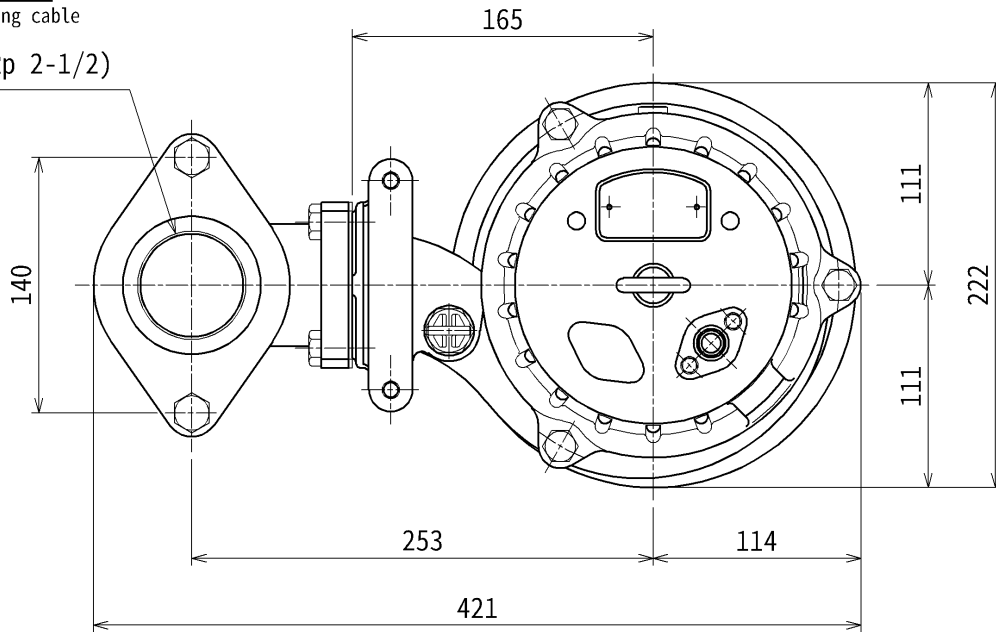
Characteristic curves according to UNI EN ISO 9906:2012 for pumps with standard material combination
 P₂<10kW: paragraph 4.4.2
 10kW<P₂<100kW: Grade 3B
 P₂>100kW: Grade 2B

DIMENSION DRAWING		No.	No.	A-28593-26
TYPE	Submersible High-Head Wastewater Pump	MODEL	50SF21.5 -63	

Approximate Weight(※)
33kg

※excluding cable

Rp 2(Rp 2-1/2)



The Figure in () shows the dimensions of discharge Bore at Nominal Dia. $\phi 65$.

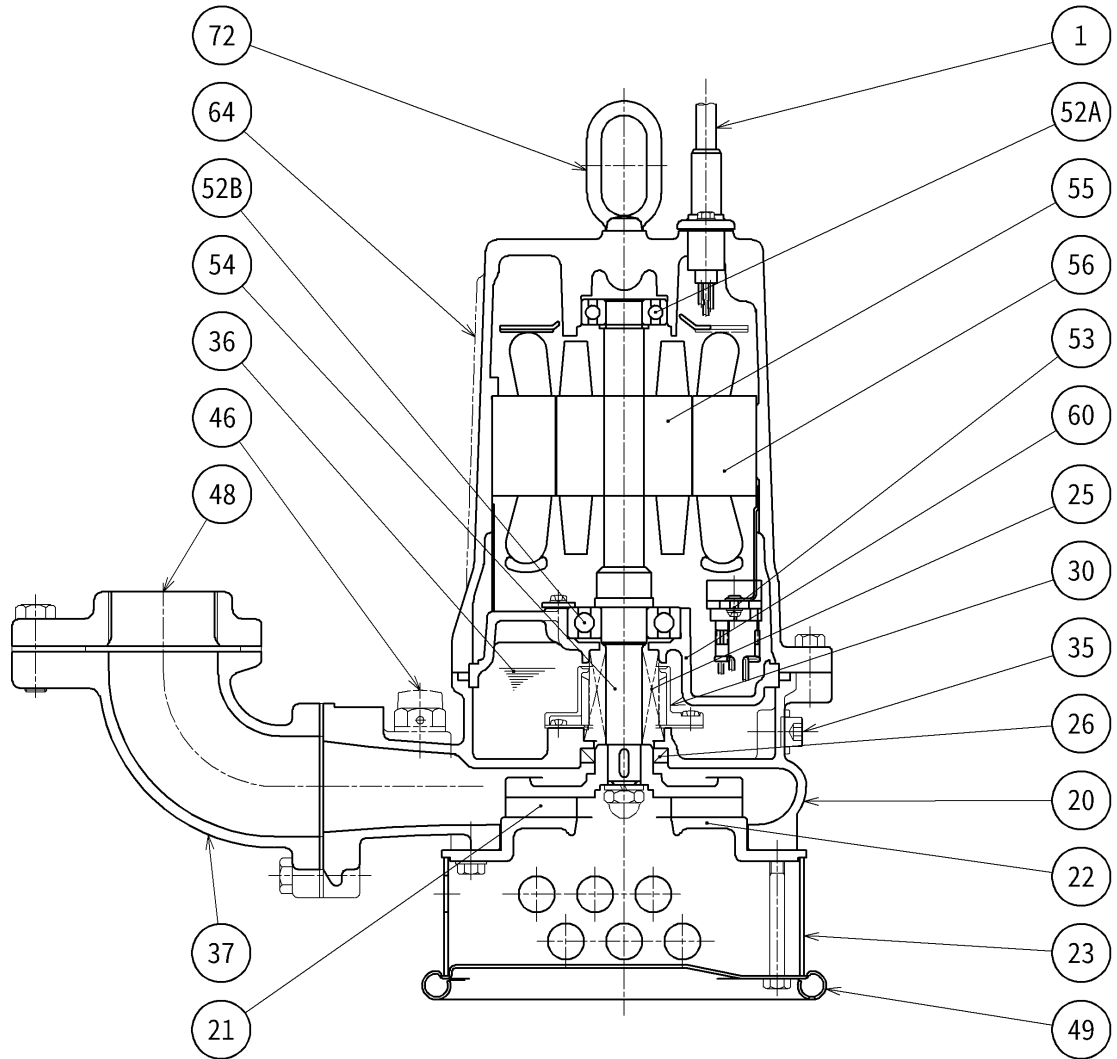
C.W.L.:Continuous running Water Level
L.W.L.:Lowest running Water Level

TSURUMI MFG. CO., LTD.

unit:mm

Created on: 2026-02-04

SECTIONAL DRAWING		No.	No.	A-28599-26
TYPE	Submersible Sewage & Wastewater Pump	MODEL	50SF21.5 -63	



REQ. SPECIFICATION	

No.	DESCRIPTION	Q'TY	MATERIAL / NOTE	No.	DESCRIPTION	Q'TY	MATERIAL / NOTE
1	Cabtyre Cable	1	PVC Sheath	49	Bottom Plate	1	Steel Sheet
20	Pump Casing	1	Gray Iron Casting 200	52A	Upper Bearing	1	6204ZZC3
21	Impeller	1	Gray Iron Casting 200	52B	Lower Bearing	1	6305ZZC3
22	Suction Cover	1	Gray Iron Casting 200	53	Motor Protector	1	
23	Strainer	1	Steel Sheet	54	Shaft	1	420J2 Stainless Steel
25	Mechanical Seal	1	H-20A	55	Rotor	1	
26	Oil Seal	1	TC32488	56	Stator	1	
30	Oil Lifter	1	Plastic	60	Bearing Housing	1	Gray Iron Casting 150
35	Oil Plug	1	304 Stainless Steel	64	Motor Frame	1	Gray Iron Casting 150
36	Lubricant		Turbine Oil(ISO VG32)	72	Eyebolt	1	304 Stainless Steel
37	Discharge Bend	1	Gray Iron Casting 200				
46	Air Release Valve	1	Nylon				
48	Screwed Flange	1	Gray Iron Casting 200				

TSURUMI MFG. CO., LTD.

Created on: 2026-02-04

All data shown are not binding. Tsurumi reserves the right to change data and dimensions without notice.